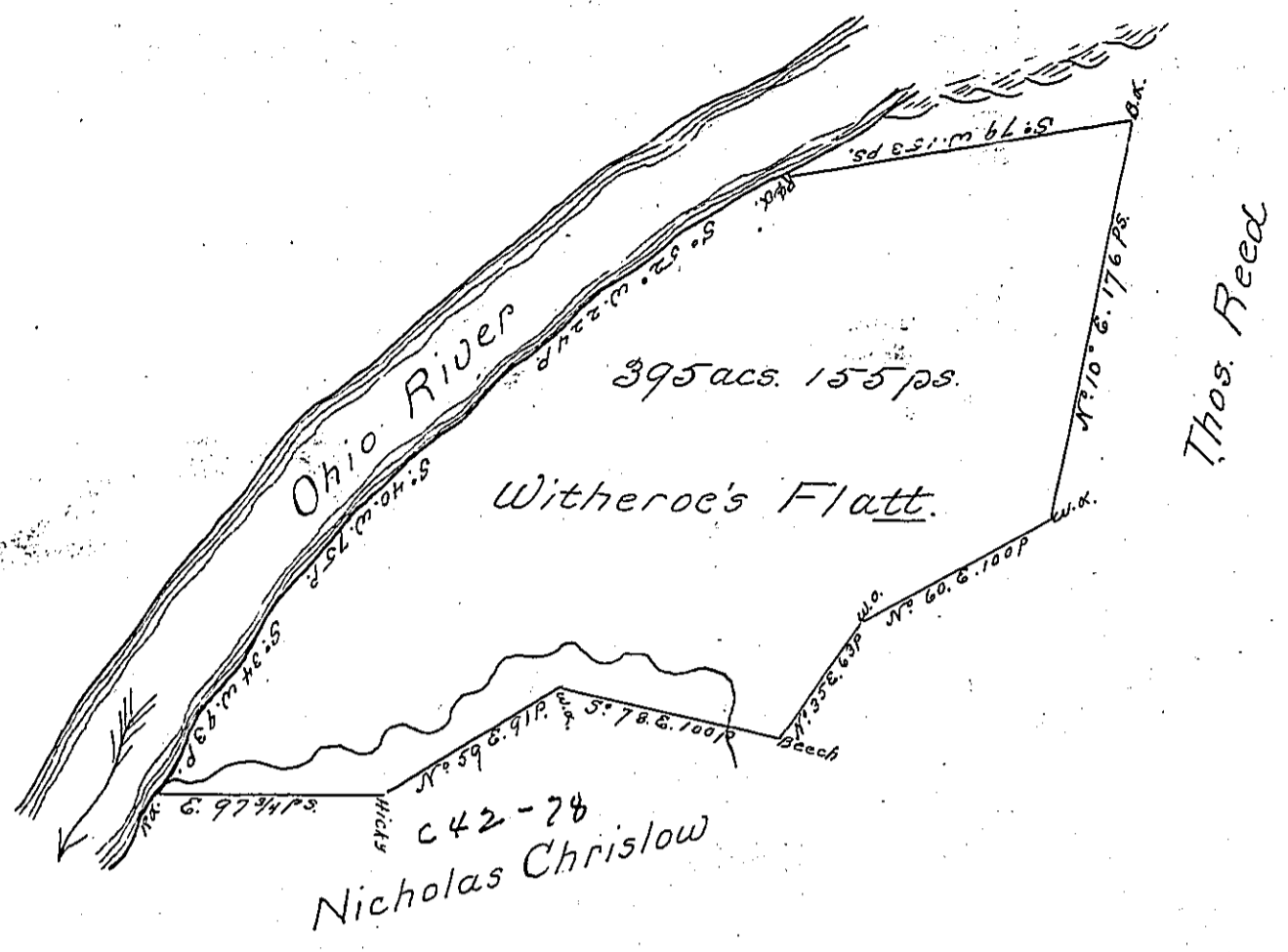


Greene
BEAVER

23

P.23-309

1-55



A Draught of a Survey called "Witheroe's Flatt" situate in Washington County on the Ohio river contains 395 acs. 155 ps. strict measure, surveyed July 18th 1786 in consequence of a Certift for 400 acs. granted to John Witheroe by the Virginia Comms^{rs} & duly entered with the County Surveyor

Entd. 22 April 1780

Retd. 6 March 1795

A true copy from the Books of Nevill & Ritchie

Presley Nevill Esq
 Paul Brodhead Esq
 Surv. Genl. Pennsylv^a

IN TESTIMONY that the above is a copy of the original remaining on file in the Department of Internal Affairs of Pennsylvania, made conformably to an Act of Assembly approved the 16th day of February, 1833, I have hereunto set my Hand and caused the Seal of said Department to be affixed at Harrisburg, this second day of April 1901

James W. Pitta
 Secretary of Internal Affairs